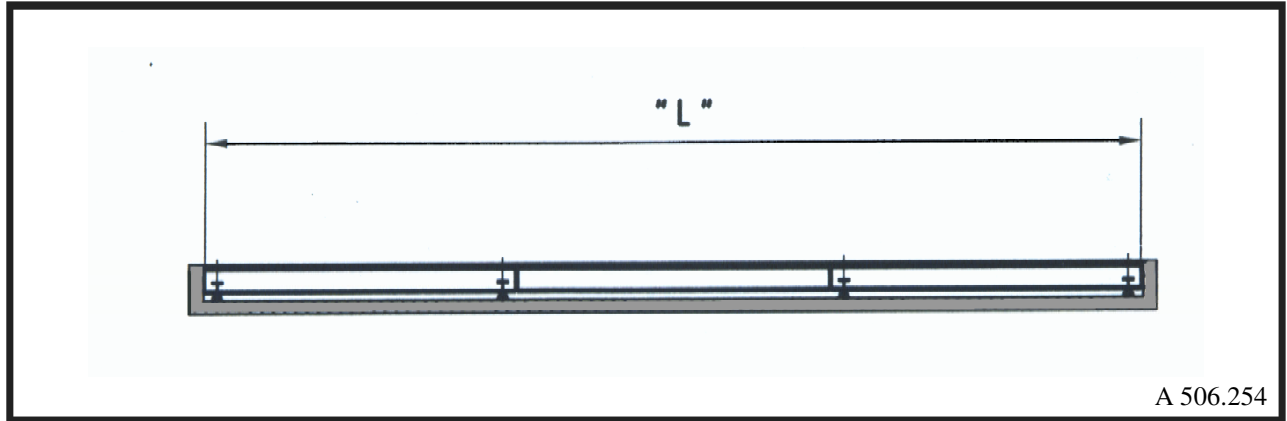


Weighbridge in steel execution for ground level installation



A 506.254

Technical data

Total Length L	Width	Quantity Modules	Weighing Capacity	Foundation Depth
6,00 m	2,60 m	1	20 t	approx. 50 cm
12,00 m	3,00 m	2	40 t	approx. 50 cm
18,00 m	3,00 m	3	50 t	approx. 50 cm
Special sizes on request.				

- ▲ to be transported easily
- ▲ suitable for export
- ▲ to be relocated easily
- ▲ modular assembly

- ▲ calibratable (legal for trade) load cells
- ▲ maintenance-free load cell bearings
- ▲ installation can be carried out by customer
- ▲ pitless type on request

The weighbridge for ground level installation, steel execution, modular assembly, is a low-cost weighbridge, suitable for low / average use. This weighbridge disposes of a foundation depth of only 50 cm. It is the alternative to our proven weighbridge in concrete execution. The steel weighbridge is available for ground level installation as well as pitless type.

The customer himself is able to carry out the installation of this weighbridge because of the low weight of the components. It can be installed and dismantled without the help of a mobile crane. Furthermore, it is possible to relocate the weighbridge without the need of a special transportation. An easy access to the load cells and for cleaning the foundation is ensured as individual segments of the bridge metal plates can be removed.