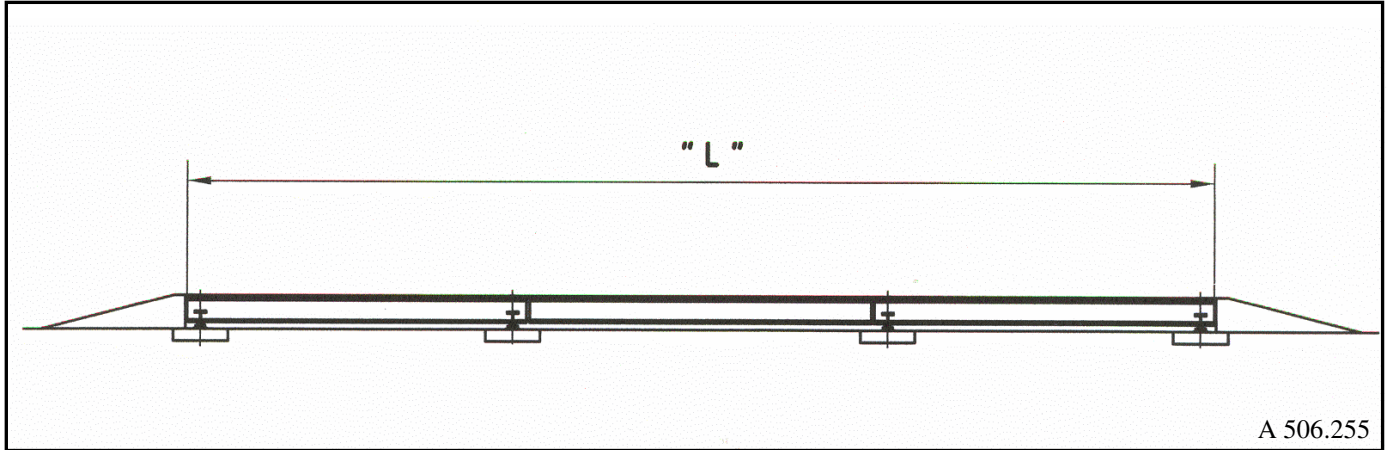


Weighbridge in steel execution

Pitless type



A 506.255

Technical data:

Total Length L	Width	Quantity Modules	Weighing Capacity	Overall Height
6,00 m	2,60 m	1	20 t	approx. 30 cm
12,00 m	3,00 m	2	40 t	approx. 30 cm
18,00 m	3,00 m	3	50 t	approx. 30 cm
Special sizes on request.				

- ▲ to be transported easily
- ▲ suitable for export
- ▲ to be relocated easily
- ▲ modular assembly
- ▲ calibratable (legal for trade) load cells
- ▲ maintenance-free load cell bearings
- ▲ installation can be carried out by customer
- ▲ ground level version on request

The weighbridge, pitless type, steel execution, modular assembly, is a low-cost weighbridge, suitable for low / average use. This weighbridge disposes of an overall height of only 30 cm. It is the alternative to our proven weighbridge in concrete execution. The steel weighbridge is available as pitless type as well as for ground level execution.

The customer himself is able to carry out the installation of this weighbridge because of the low weight of the components. It can be installed and dismantled without the help of a mobile crane. Furthermore, it is possible to relocate the weighbridge without the need of a special transportation. An easy access to the load cells is ensured as individual segments of the bridge metal plates can be removed.